

Throned Upon The Awful Tree

John Ellerton, 1875

Davide C. Marney, 2000

♩ = 66

Cm Gm7 A^b E^b Cm Gm7 A^bMaj7 B^b

Throned up - on the aw - ful tree, King of grief, I watch with thee.
 Si - lent through the three dread hours, wrest - ling with the e - vil pow'rs,
 Hark, that cry that peals a - loud roll up - ward through the whelm - ing cloud!
 Lord, should fear and an - guish dark - ly o'er my sin - ful soul,

5 Cm Gm7 A^b E^b Cm Gm7 A^bMaj7 B^b

Dark - ness veils thine an-guished face: none its lines of woe can trace:
 Left a - lone with hu - man sin, gloom a - round thee and with - in,
 Thou, the Fa - ther's on - ly Son, thou, His own A - noint - ed One,
 Thou, who once wast thus be - reft that thine own might ne're be left,

9 Cm Gm7 A^b E^b Cm Gm7 1-3. A^bMaj7 B^b rit.

none can tell what pangs un - known hold thee si - lent and a - lone
 till th'ap-point - ed time is nigh, till the Lamb of God may die.
 thou dost ask Him can it be? "Why hast thou for - sak - en me?"
 Teach me by that bit - ter cry in the gloom to

13 4. A^bMaj7 B^b Cm

know thee ni - gh.

Throned Upon The Awful Tree

John Ellerton, 1875

Davide C. Marney, 2000

$\text{♩} = 66$



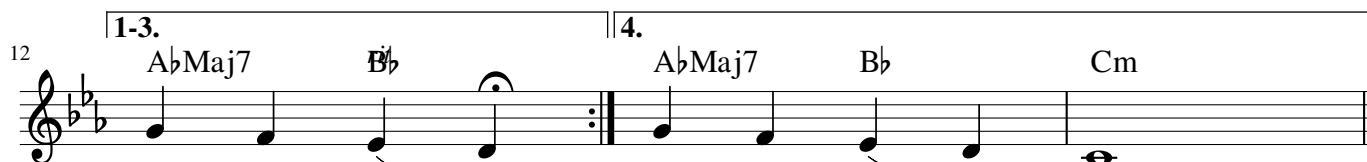
Throned up - on the aw - ful tree, King of grief, I
Si - lent through the three dread hours, wrest - ling with the
Hark, that cry that peals a - loud up - ward through the
Lord, should fear and an - guish roll dark - ly o'er my



watch with thee. Dark - ness veils thine an-guished face: none its lines of
e - vil pow'rs, Left a - lone with hu - man sin, gloom a - round thee
whelm-ing cloud! Thou, the Fa - ther's on - ly Son, thou, His own A -
sin - ful soul, Thou, who once wast thus be - reft that thine own might



woe can trace: none can tell what pangs un - known hold thee si - lent
and with - in, till th'appoint - ed time is nigh, till the Lamb of
noint - ed One, thou dost ask Him can it be? "Why hast thou for -
ne're be left, Teach me by that bit - ter cry in the gloom to



and a - lone know thee ni - gh.
God may die.
sak - en me?"